

# Activities

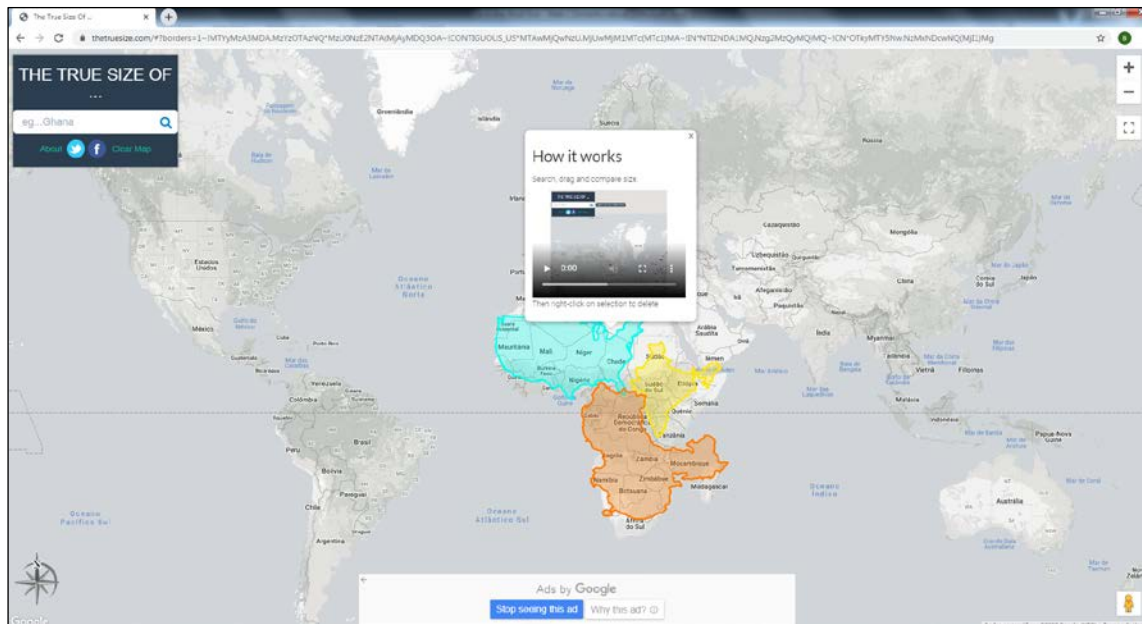
## Topic: Free

Use Google Translate in case you don't understand something.

### 1. The true size of countries

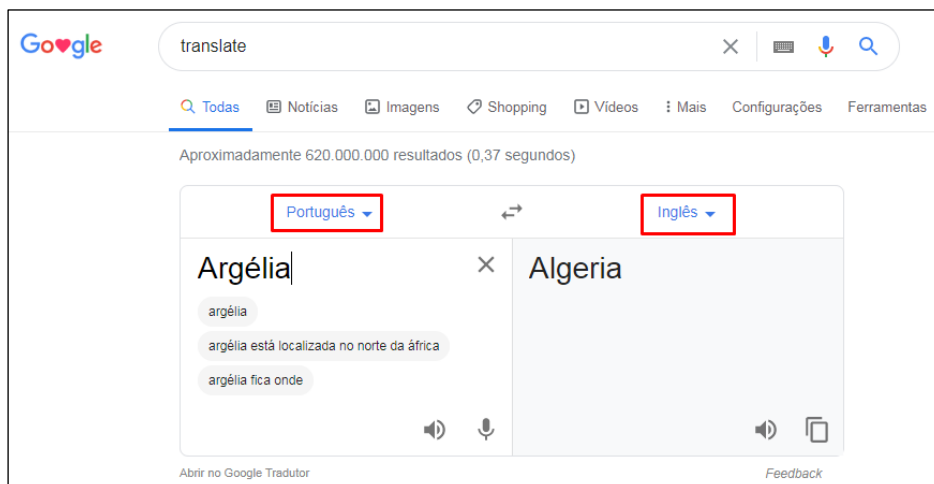
*Instructions:*

Go to the website *The True Size of...* ([www.thetruesize.com](http://www.thetruesize.com))



*This page allows you to drag and drop the shape of countries and see how they are affected by the projection of the globe in a two-dimensional image. It begins with a few shapes already there, but let's erase them. To do that, **right-click** on the shape.*

*After you've cleared the map, search for Brazil. **Note** that the search **must** be using the English name of countries, even though they appear with their Portuguese names on the map. If you need help with the name of any countries, use Google Translate.*





**First**, move the shape of Brazil horizontally, and see what happens. After that, move it vertically – first to the South Pole, and then to the North Pole. Then, answer:

- a) **What happened when you moved it horizontally? What happened when you moved it down? What happened when you moved it up?**

*When I moved it horizontally, it...*

**Second**, move the shape of Brazil over to Northern Africa, then to Western Asia, and then to Central Europe. There's not one correct spot you need to place the shape, just move it to see how the shape changes and which countries would fit inside Brazil. Choose one of the three spots, put Brazil on top, and then answer:

- b) **Which countries fit inside Brazil in the location you chose?**

*The countries...*

**Third**, erase Brazil, and look up Germany. Then drag Germany's shape over to Brazil, and move it around. Then, answer:

- c) **Can you fit Germany inside any Brazilian state?**

*Yes/No, you can...*

**Fourth**, erase Germany, and look up Sweden. Drag the shape over to the continent of Africa, and move it around. Then, answer:

- d) **Inside how many African countries could you fit Sweden?**

*Sweden fits...*

**Fifth**, erase Sweden, and look up any country of your choice. Drag its shape around the map, then choose a country to compare sizes, and answer:

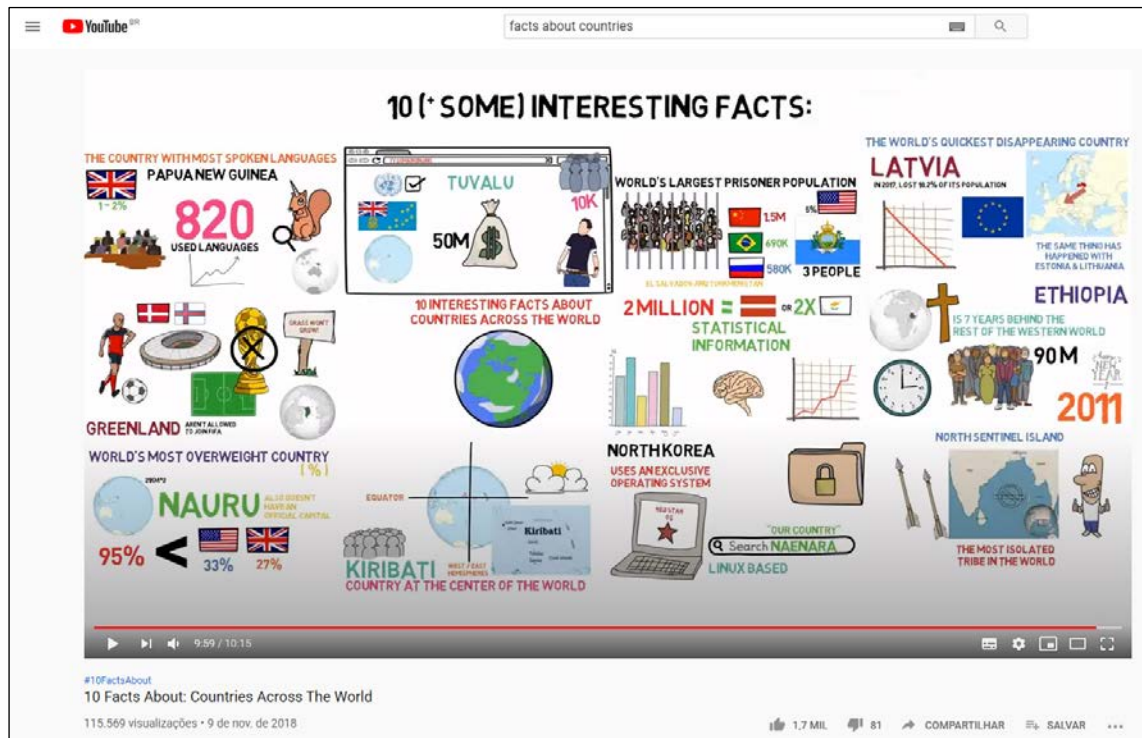
- e) **Which country did you choose? What size comparison did you make?**

*I chose [country], which is...*

## 2. Some interesting facts about countries

### Instructions:

Go to the YouTube website using the link to the video "10 Facts About: Countries Across The World". (<https://youtu.be/s151grvpOzU>)



Watch the video, and then answer the questions.

a) What is the interesting fact mentioned about the US?

The US has...

b) Why does Tuvalu get most of its money from the internet?

Because...

c) Papua New Guinea's official language is English. How many people actually speak it regularly? How many languages are spoken in the country?

Around [x]%...

d) Why can't Greenland join FIFA?

Because...

e) What is the main cause for the high percentage of obese people in small islands from the Pacific, like Nauru?

The populations...

**f) What's interesting about Kiribati?**

*It is located...*

**g) What is the name of North Korea's equivalent for Windows?**

*It is called...*

**h) Are the natives of North Sentinel Island friendly? What has happened to visitors there?**

*The natives...*

**i) The video mentions two interesting facts about Ethiopia. What are they?**

*Ethiopia...*

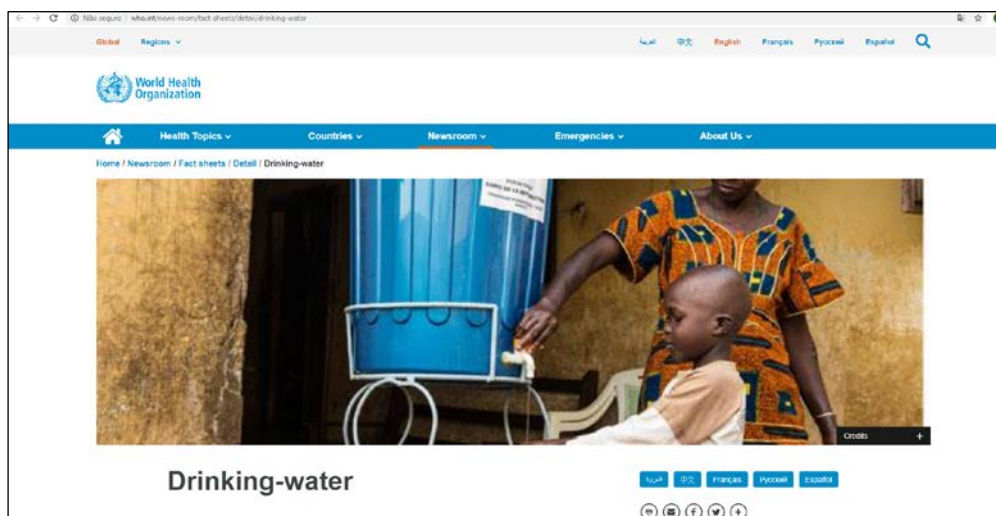
**j) What has been happening to Latvia according to the video?**

*Its population...*

**3. Drinking-water in the world**

*Instructions:*

*Go to the World Health Organization (WHO) website using the link to the article "Drinking-water". (<https://www.who.int/news-room/fact-sheets/detail/drinking-water>)*



*This article deals with facts about the availability and consumption of drinking-water around the world, the challenges presented, and WHO's actions to help the countries solve their problems. Read it and answers the questions.*

**a) Which key facts did you find most interesting? Why? (you can find them in the last page here)**

*I found...*

**b) Is there a Sustainable Development Goal related to drinking-water? What does it call for?**

*There is...*

**c) Contaminated water is linked to the transmission of which diseases?**

*People have...*

**d) According to the article, 15% of patients in world, in average, develop an infection during their stay in a hospital. What could that have to do with water?**

*I think...*

**e) How many people are estimated to die from diarrhea each year, as a result of drinking unsafe water? How many of these are children?**

*It is estimated that...*

**f) What are some economic and social effects of the availability of water?**

*Good water sources cause...*

**g) What are some of the challenges for drinking-water availability?**

*There's...*

**h) What are some of the actions WHO has been taking?**

*WHO...*

**i) Did you click on any of the links presented in the text at the end? What was it about?**

*Yes/No,...*

14 June 2019

### Key facts

- In 2017, 71% of the global population (5.3 billion people) used a safely managed drinking-water service – that is, one located on premises, available when needed, and free from contamination.
- 90% of the global population (6.8 billion people) used at least a basic service. A basic service is an improved drinking-water source within a round trip of 30 minutes to collect water.
- 785 million people lack even a basic drinking-water service, including 144 million people who are dependent on surface water.
- Globally, at least 2 billion people use a drinking water source contaminated with faeces.
- Contaminated water can transmit diseases such as diarrhoea, cholera, dysentery, typhoid, and polio. Contaminated drinking water is estimated to cause 485 000 diarrhoeal deaths each year.
- By 2025, half of the world's population will be living in water-stressed areas.
- In least developed countries, 22% of health care facilities have no water service, 21% no sanitation service, and 22% no waste management service.